



SPECIFICATION S380

PRINCIPAL DIMENSIONS

LOA	11.83 m	38' 10"
Beam	3.77 m	12' 4"
Draught	1.09 m	3' 7"
Height above waterline inc. mast	3.68 m	11' 11"
Height above waterline excl. mast	3.21 m	9' 80"
Headroom	1.93 m	6' 4"
Fuel capacity	2 x 372 l	164 UK Gal
Water capacity	214 l	47 UK Gal
Displacement	7,885 kg	7.76 t
CE Category	B	

ENGINE OPTIONS

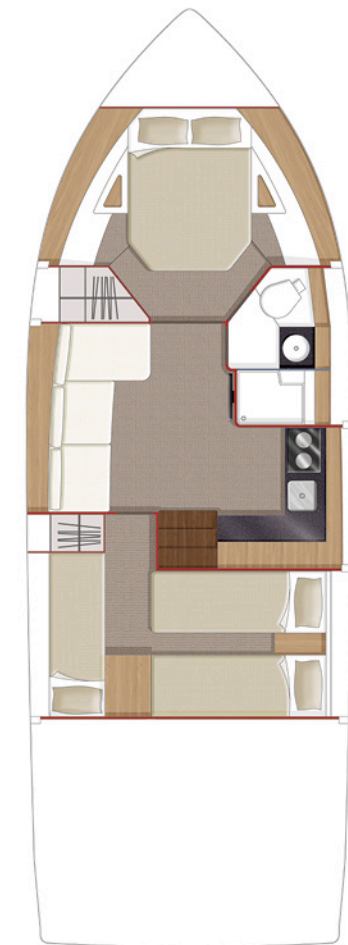
- 2 x Volvo Penta D4 260 hp, Duoprop Sterndrive 31/33 knots*
- 2 x Volvo Penta D4 300 hp, Duoprop Sterndrive 32/34 knots*
- 2 x Volvo Penta D6 330 hp, Duoprop Sterndrive 36/37 knots*+

+ not available with generator air conditioning from shore power only

*All performance figures are given in good faith and are intended as an indication. These figures cannot be guaranteed as top speed in particular is affected by the cleanliness of the hull, conditions of the propellers, weight carried and air/sea temperature. SEALINE reserves the right to change specifications in line with the company policy of improvement through research and development. Errors and omissions expected. Please check with your dealer for a full list of inclusions.



Main Deck



Lower Deck

DECK

- Anchor Hauser Stainless steel
- Anchor locker, self draining with S/S tie bar for fenders under lid
- Deck, moulding non-slip
- Fendering strip in aluminium with white rubber insert
- Fuel and water deck inlets
- Foredeck hatch, opening
- Foredeck handrails
- Navigation lights, full set
- Stainless steel pulpit rail, stainless steel top rail and wire below
- All cleats are stainless steel
- 4 mooring cleats
- 2 Spring cleats
- Windlass electric
- Windscreen, toughened clear glass

COCKPIT AND BATHING PLATFORM

- Aft pillars in Anthracite
- Engine room access with ladder
- Ensign socket and staff
- Fuel shut-off valves
- Gas bottle locker with drain
- Handrails in stainless steel
- Cockpit Lighting,
- Courtesy lights in cockpit
- Moulded non-slip deck, self draining
- Remote battery switches
- Saloon door, sliding in Plexiglass (translucent)
- Sealine convertible fabric roof system
- Seating, L-shaped with chaise longue fwd
- Sealine clamshell storage in roof for optional canopies
- Storage lockers including ice bin
- Teak laid large bathing platform self draining
- Stainless steel bathing ladder.
- Transom door to stbd
- Transom shower with hot and cold water
- Wet bar with sink and provision for fridge and grill

HELM POSITION

- Chart table with perspex lid
- Compass,
- Drinks holders (2)
- Engine instrumentation, full set
- Engine controls
- Teak footrest at helm

- Fuel gauges
- Helm seat and pilot seat both with bolsters and storage underneath
- Rudder angle indicator
- Socket, 12V
- Speed and depth logs, Raymarine i70 x 1
- Steering wheel, fixed angle

SALOON

- Skylight with full length blind
- Sockets, 230V
- Storage lockers overhead
- Table, fixed leg
- Storage under saloon floor
- Drinks cabinet and provision for TV
- Electrical control panel for 220V AC and 12V DC circuits
- Lighting, overhead
- Indirect lights
- Courtesy lights
- Portholes, (2) opening
- Seating, L-shaped

GALLEY

- Cutlery drawer and tableware storage
- Fridge
- Lighting, overhead
- Oven (gas)
- Portholes (1) opening
- Sink, stainless steel with mixer taps
- Socket, 230V
- Storage cupboards and overhead lockers
- Stove, gas (2) burner and lid
- Waste bin

FORWARD CABIN

- Berth, double with storage below
- Deck hatch, opening with blind
- Door to head
- Eye level shelving
- Lighting, overhead
- Indirect lighting
- Reading lights
- Low level drawer under wardrobe
- Portholes (2), opening
- Socket, 230V
- Vanity shelf, port and stbd

- Wardrobe to port
- Bed surround wood with stainless and fabric insert

FORWARD CABIN EN SUITE & DAY HEAD

- Cup and toilet roll holder
- Round bowl hand basin with mixer tap
- Lighting, overhead
- Porthole, opening
- Shaver socket
- Shower drain with automatic pump
- Door to separate stall shower
- Storage cupboard
- Toilet, Electric
- Towel ring

ELECTRICAL

- AC system, 230V with shore support system
- Batteries - domestic and stbd engine 2x160Ah
- Batteries - port engine 2 x 95 Ah with link switch
- Battery - forward for windlass
- Battery charger, 50 amp
- Hot water boiler 20 liters
- CO detector in each cabin (3)
- DC system, 12V
- Fresh water pump
- Water gauge
- Windscreen wipers, (2) with screen wash

MECHANICAL

- Access hatch to engine room from cockpit
- Bilge pumps, automatic and manual
- Engine room sound proofing
- Engine room fans
- Engine room light
- Fire extinguisher system, automatic, in engine room
- Fuel tanks
- Fuel filters for engines
- Steering, electric
- Water tank
- Holding tank with deck outlet
- Windscreen demisters

DÉCOR

- Blinds saloon, galley, skylight, front and aft cabin
- Carpet in cabins

- Wood floor Australian Acacia style in saloon and galley
- Companionway steps, Australian Acacia style with safety treads
- Door frames, in wood
- Furniture finished in wellington walnut
- Galley and toilet counter tops, Royal Quartz Corian
- Upholstery seating and headboards - from selection
- Convertible roof, white
- Dash, matt finish, Sealine grey
- Mattresses

AFT CABIN

- Berth, twin infill to create large double
- Lighting, overhead
- Portholes, (2) opening
- Single berth on portside with storage bin below
- Skylight (1)
- Socket, 230V

MISCELLANEOUS

- Hull white gel coat
- Identified locations for hand held fire extinguishers - (hand held fire extinguishers are not supplied)
- Sealine owner's manual in Sealine bag