

**Judel/vrolijk & co - engineering gmbh**  
 AM SEEDICH 45  
 27572 BREMERHAVEN  
 GERMANY  
 TELEFON +49 (0)471 97 123 95  
 TELEFAX +49 (0)471 97 123 96  
 E-MAIL info@judel-vrolijk.com

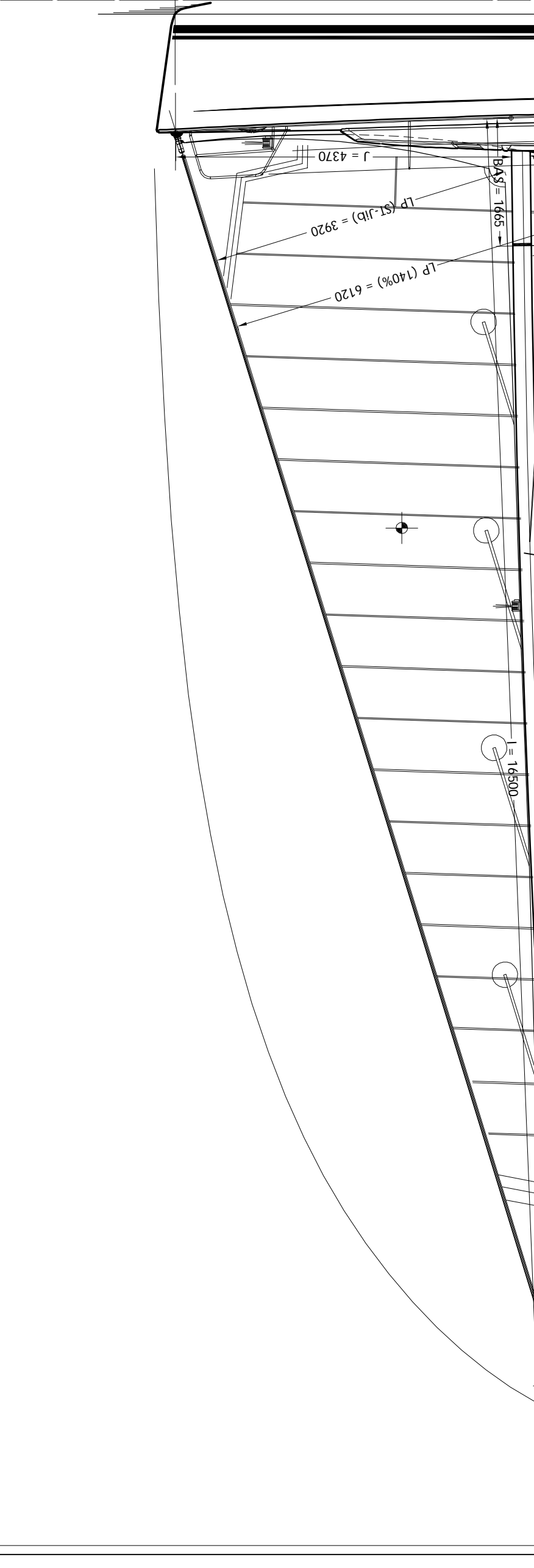
1 : 60	SCALE
1 OF 1	SHEET
H405-1140-750	DRAWING NUMBER

**HANSE 405**  
**SAIL PLAN**

THE INFORMATION CONTAINED HEREON IS STRICTLY CONFIDENTIAL AND IS SUBJECT TO A CONFIDENTIALITY AGREEMENT AND A PERSON USING OR DISCLOSING THE INFORMATION CONTAINED HEREON IN BREACH OF SUCH AGREEMENT SHALL BE SUBJECT TO AN ACTION TO ENJOIN SUCH USE AND A SUIT FOR DAMAGES.

**Judel/vrolijk PROPRIETARY**

ON THIS DRAWING ARE TO BE CHECKED ON THE BOAT !  
 DUE TO BUILDING TOLERANCES ALL DIMENSIONS GIVEN IN THIS DRAWING ARE GIVEN IN MM.



02	Measurements and Details added	22/05/08	Br
01	J - Measurement changed	22/05/08	Br
00		06/05/08	Br

L <sup>tuil</sup>	=	11,99	m
LWL	=	10,80	m
Beam	=	4,08	m
Draht	=	2,05	m
Displ. (m <sup>3</sup> )	=	8,990	kg
Ballast	=	2,900	kg
RM @ 1°	=	2,70	kgm
RM @ 30°	=	5,858	kgm
Mainsail	=	53,53	m <sup>2</sup>
Jib (106%)	=	38,21	m <sup>2</sup>
Jib (S1)	=	34,05	m <sup>2</sup>
Mast top-DWL	=	19,56	m
Chain Plate (CPW)	=	2,70	m
Spreader Rake	=	20,0	deg.
Engine	=	29,5/40	kW/hp